

the Pipeline

SPRING / SUMMER 2021 KEEPING YOU INFORMED

Carbon Lehigh Special Needs Children's Foundation 2021 Summer Camp Gifting Program

The Carbon Lehigh Special Needs Children's Foundation offers a "Gifting" of dollars to help families and students with special needs to pay for day and residential summer camp programs. This "Gifting" program is made possible from participation of many educators and business partners in an annual Golf Tournament and donations of various community leaders, as well as businesses.

Students can apply if they:

- are completing Kindergarten through 12th grade or to age 21.
- receive services through an IEP in school.
- attend a public school in Carbon or Lehigh Counties.

Only applications that meet all student criteria will be accepted. Completed applications will be reviewed by the Foundation Gifting Committee. Gifts will not exceed \$300 per student and will only pay a percentage of the registration fee. Applications will be awarded as funding permits. Students awarded summer camp gifts will be notified in writing as to the amount of the "gift." Gift amounts will be sent from the Foundation Gifting Program to the camp directly to support registrations and camp fees.

We encourage and appreciate any pictures and letters from students about their camping experience.

"This opportunity is made possible through
The Carbon Lehigh Special Needs Children's Foundation."

**Our Mission is to enhance educational and recreational opportunities
for children with special needs enrolled in the public schools of
Carbon and Lehigh Counties.**

If you are interested in receiving an application, contact
June Kmetz at 610-769-4111 ext. 1673 or kmetzj@cliu.org.



**Carbon Lehigh
Intermediate Unit #21**
4210 Independence Drive
Schnecksville, PA 18078-2580
610-769-4111, 800-223-4821
www.cliu.org

Helping Children Learn

"CLIU is a service agency committed to Helping Children Learn."

The Carbon Lehigh Intermediate Unit is an equal opportunity employer and does not discriminate on the basis of race, color, age, creed, religion, sex, sexual orientation, ancestry, national origin, marital status, genetic information, pregnancy or handicap/disability in activities, programs or employment practices. For information regarding civil rights or grievance procedures, contact the Director of Special Programs and Services, Compliance Officer for Educational Programs and Services, or the Director of Human Resources, Compliance Officer for Employment Practices, at the Carbon Lehigh Intermediate Unit, 4210 Independence Drive, Schnecksville, PA 18078-2580, 800-223-4821.

Everyday Lives Virtual Conference

Save the Date!



Everyday Lives 2021 Virtual Conference

The Pennsylvania Department of Human Services, Office of Developmental Programs, invites you to Save the Date and participate in the statewide Everyday Lives Conference. This year's conference will be virtual and include the collaboration, education, and innovation to celebrate the everyday lives of individuals with intellectual disabilities and autism.

This year's Everyday Lives Conference merges the Everyday Lives Conference with the Community of Practice Regional Collaborative Conference, the Technology Summit, and the Dual Diagnosis Conference.

When Will the Conference be Held?

The Conference will be held over a period of five weeks:

Tuesday, May 11

Tuesday, May 18, and Wednesday, May 19

Wednesday, May 26

Wednesday, June 2, and Thursday, June 3

Thursday, June 10

Who Should Attend?

Individuals with disabilities, families, professionals, clinicians, students, and caregivers participate in the Everyday Lives Conference. The conference will also include an exhibit hall for featuring ODP training partners. More than 1,200 attendees are expected.

What Topics will Be on the Conference Agenda?

Engage with dozens of professionals, experts and pioneers in workshops, breakout sessions, panels and keynote sessions. Topics include racial equity, employment and self-advocacy, and much more!

How Do I Get More Information and Register?

Watch for future announcements of the draft and final agenda and for a link to register as an attendee or exhibitor. We will also post information at www.everydaylives.org. Early bird registration coming soon!

25th Annual National Autism Conference - August 2-5, 2021

Virtual Conference

The 2021 conference will be offered as a virtual opportunity as part of our efforts to maintain public health and safety in the face of the coronavirus outbreak. Sessions will be available for viewing beginning Monday, August 2. Anyone may watch free of charge.

Conference Mission: This conference provides comprehensive, evidence-based information to assist all educational team members, other professionals, and families in developing effective educational programming for all students with autism spectrum disorders.

Who Should Watch: Family members, physicians, speech-language pathologists, administrators, higher-education faculty, general and special education professionals, early intervention staff, related service personnel, behavioral health analysts/professionals, and anyone interested in autism spectrum disorders.



National Autism Conference Outcomes:

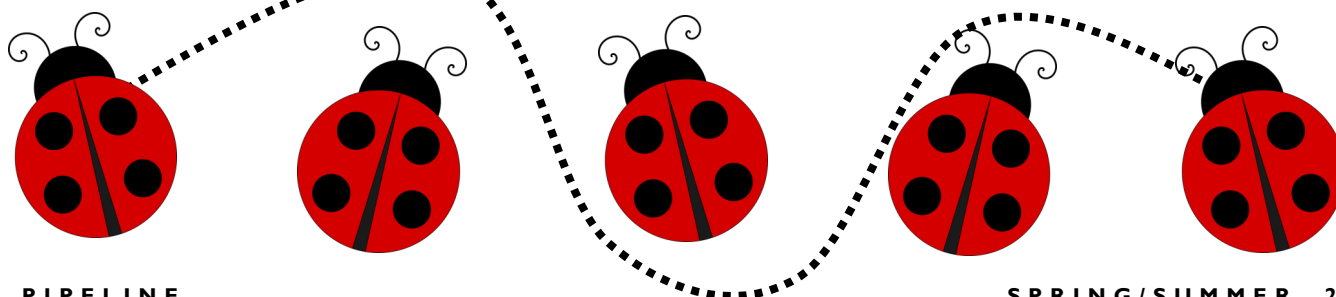
- Cite specific research findings concerning autism spectrum disorders and relate them to assessment, instruction, and progress determination, including specific communication.
- Describe appropriate interventions, materials, and progress-monitoring practices based on continuous instructional evidence in the areas of cognition, language, social skills, and motor skills.
- Identify, analyze, and apply evidence-based practices for the treatment of students with autism spectrum disorders in cognition, communication, and social and motor skills.
- Formulate practical and evidence-based instructional plans for students with autism spectrum disorders in order to have them progress in the general education curriculum with specific accommodations in language, cognition, and social and motor skills.
- Incorporate the use of instructional technology and visual-graphic organizers into the instruction of students with autism spectrum disorders in order to increase organizational skills and improve achievement.
- Relate specific assessment and intervention procedures to the general education curriculum and academic standards and benchmarks, including specific applications to communication-based approaches.

For more information and to register, visit <https://autism.outreach.psu.edu>

In partnership with:



pennsylvania
DEPARTMENT OF EDUCATION





Powered by Love

Contact: Laura Casolaro at 856-383-0148

Email: LehighValleyWalk@autismspeaks.org

Registration:

8:30 am

Walk Start:

10:15 am

Lehigh Valley Walk

Saturday, September 18, 2021
Arts Quest Center at SteelStacks
101 Founders Way
Bethlehem, PA 18015

REGISTER TODAY!

AutismSpeaksWalk.org/LehighValley
LehighValley@autismspeaks.org
856-858-5400
#AutismSpeaksLehighValley

Bureau of Autism Services Resource Center

The Bureau of Autism Services launched the Autism Services, Education, Resources, and Training Collaborative (ASERT) Resource Center. The Resource Center has 3 components, a statewide toll-free number for live assistance, 1-877-231-4244, a new website, <http://www.PAautism.org> and outreach specialists available for community participation. www.paautism.org is designed to bring together existing resources for families, providers, and self-advocates, and allow them to access a broad array of information to help meet the needs of those living with or serving people with autism.

NEW - Lehigh Valley Autism Guide Webinars

Take control of the future and check out all 29 of the upcoming webinars on managing stress, transitions, IEP's, and more. It's a great opportunity for you to get your questions answered and network with professionals who can help you keep moving forward.

<https://lvag2017.wixsite.com/empowered>

Have you heard of an Executive Function Coach?

The term caught my attention when parents were asking for help because their college students were not showing up for class and failing as a result. They weren't able to talk to professors and the college admin often didn't want to get involved with the parents. This was frustrating to parents who are shelling out thousands of dollars and they felt powerless to help their young adult succeed in school. Then I heard from parents saying they hired an Executive Function Coach and the huge difference it made.

It's a profession that has been gaining in popularity for the last 5 years. An EFC will act as an advisor, sounding board, manager, strategist and guide. They can help increase self-awareness, expand thinking past road blocks and help build on strengths through facilitating one on one conversations.

https://www.youtube.com/watch?v=dEKOZtI9yPg&feature=emb_logo

Building Executive Function skills begins at home

So if your child is in elementary, middle or high school, you can talk to your therapeutic team to help you create age appropriate goals. Therapeutic riding is another option of building these skills in a more enjoyable way for kids. Caring and preparing a horse to ride facilitates organizational skills and self-awareness. If you want to learn the basics of Executive Functioning, click on the button to go directly to the page.

To learn more, visit <https://lvag2017.wixsite.com/empowered>.

Click on Therapies > Executive Function Skills.

The Special Education Process for Families

The Pennsylvania Department of Education, Bureau of Special Education is pleased to announce the following webinar opportunity:

The Special Education Process for Families

March 29, 2021
Zoom Webinar
10:00 AM – 11:30 AM

There is a lot to know about the process by which children are identified as having a disability and in need of special education and related services. This session will cover the legal basis for special education, questions around parental referrals, and the significance of parental communication among other things to give a big picture of the Special Education Process for families.

Presenters: Amira Hill-Yancy and Kim Jenkins

Credit(s): This event is not eligible for credit.

Registration Information:

You may register online by clicking on the name of the event on the Training Events Calendar at:
<https://www.pattan.net/events/>

For content related information and questions, please contact Amira Hill-Yancy, PaTTAN East at:
800-441-3215 or ayancy@pattan.net.

For general registration information and questions, please contact Debra Jordan, PaTTAN East at:
800-441-3215, ext 7224 or djordan@pattan.net.

Pennsylvania Miss Amazing - April 15-17, 2021

We are back and started planning our 2021 virtual event to include a drive through trophy and crowning ceremony!

Miss Amazing is a nationwide program that provides opportunities for girls and women with disabilities to build self-confidence.

WHEN: April 15, 2021 Event hosted via Zoom
April 16, 2021 Representatives announced
April 17, 2021 Drive through ceremony at Emmaus High School

Contact: To support or donate, visit <https://missamazing.org/chapters/PA> or send an email to mel.maresca@missamazing.org

Who can participate?

Girls and women ages 5 and older who have an IEP, IPP, 504 plan, SSI, or a physician's records proving disability are eligible to participate.

What is the cost to participate?

The only cost to participate is 5 cans of food! We donate the total amount collected back to the community.

What is required to participate?

Our skill areas are carefully selected to empower the participants to share their abilities and strengthen their communication skills. The skill areas include interview, personal introduction, and passion presentation!

NURTURE A **SISTERHOOD** BUILD **LIFE SKILLS** INCREASE **VISIBILITY**

Assistive Technology and BrainSteps - March 17, 2021

Brought to you by The Local Task Force 21

WHEN: Wednesday, March 17, 2021

TIME: 10:00 a.m.

WHERE: Via Zoom

MEETING ID: 537 878 6005

PASSCODE: CLIU21



Magellan Behavioral Health Services and Carbon County Behavioral Health Services

Brought to you by The Local Task Force 21

WHEN: Wednesday, April 21, 2021

TIME: 10:00 a.m.

WHERE: Via Zoom

MEETING ID: 537 878 6005

PASSCODE: CLIU21



Activities for Those with Special Needs

Organizations and agencies presenting: activities/events/camps/great resources

Brought to you by The Local Task Force 21

WHEN: Wednesday, May 19, 2021

TIME: 10:00 a.m.

WHERE: Via Zoom

MEETING ID: 537 878 6005

PASSCODE: CLIU21



Local Task Force Meetings

The Right to Education Consent Agreement guarantees a free public program of education and training to school-age students with special needs. The State Task Force and twenty-nine Local Task Forces were established to ensure that the intent and spirit of the consent agreement is followed. The Local Right to Education Task Force is consumer driven, comprised of parents, educators, agency representatives, and other persons concerned with educational services for students with disabilities.

NEW TO LTF21?

The Local Task Force 21 is comprised of families, the Carbon Lehigh Intermediate Unit 21, advocates, school districts and service providers. We come together to share knowledge, discuss rights and develop and appropriate education for the students with special needs. We want to empower families to gain insight, build connections with others, and help become the voice for those in their lives with special needs. The journey is long, full of opportunity, and having a good team in place makes all the difference.

Please visit our Facebook page - @localtaskforce21

Connect with other families by visiting our Support Group Page: Carbon Lehigh IU #21 Family Support Group

The Local Right to Education Task Force & Carbon & Lehigh Counties 2021

As of 7/31/20, all LTF21 meetings for the 2020-21 school year will be held virtually.

Meetings and presentations begin promptly at **10:00 a.m.**

All parents and interested persons are welcome to bring questions and concerns to the meetings.
Call 610-769-4111 X1218 or 800-223-4821 for more information.

Meeting Dates:

March 17, 2021	<i>AT for Students and BrainSteps Information hosted by Danielle Argot and Carley Knappenberger</i>
April 21, 2021	<i>Magellan and CMP/CCBH Services</i>
May 19, 2021	<i>TBD</i>

Officers:

LTF Chairperson: Amanda Robbins

LTF Secretary: TBD

CLIU 21 Contact: Kelly Danner

For more information on the LTF, please visit our webpage on the CLIU #21 website at www.cliu.org, Special Programs and Services Department, Local Task Force.

State Force Task Link:

<https://www.pattan.net/about-us/partners/state-task-force/>

You can also keep in touch with us through email, localtaskforce21@gmail.com or mandaphd1@gmail.com, and on Facebook at Local Task Force 21.



CLTCC Meeting - 2021-22 School Year Meeting Dates

The Carbon Lehigh Transition Coordinating Council meets four times per year to discuss and collaborate on issues pertaining to transition for students with disabilities ages 14 to 21. The Council includes agency personnel, transition coordinators, parents, and teachers and is always looking for new members. Please join us for our next meeting.

The mission of CLTCC is to promote effective transition for students with disabilities from school to adult life. We are comprised of parents, agencies, employers, and educators from the Intermediate Unit, School Districts, Vocational and Special Education, and Higher Education interested in learning and sharing information regarding transitioning to adult life.

Thursday, April 14, 2021
Thursday, October 14, 2021
Thursday, December 16, 2021



Zoom link-
<https://zoom.us/j/97523829129>
9:00 – 11:00 a.m.

Look for Updates and ALL minutes on the CLIU21 Website under:
cliu.org > Departments > Special Programs and Services >
Transition resources > Carbon Lehigh Transition Coordinating Council

Or Visit

<http://www.cliu.org/Page/352>

15th Annual (Virtual) Celebration Awards - March 25, 2021

****Hosted by the Celebration Awards Committee of Lehigh & Northampton Counties**

March 25, 2021
3:30 p.m.
Webinar via Zoom

This event was developed to recognize March as *Intellectual Disabilities Month* in Pennsylvania. Just about every day, individuals with intellectual disabilities accomplish amazing things, and this is our chance to honor their achievements!

To be eligible for a Celebration Award, a person must be diagnosed with a Developmental Disability and must receive a disability-related service in either Northampton or Lehigh County. Awards are given to individuals with I/DD who have demonstrated success in one of six areas. Individual awards for achievements are given to a person from Lehigh County and Northampton County!



All nominations are due by February 17, 2021.

Questions?

Please email Celebration.Committee.15@gmail.com

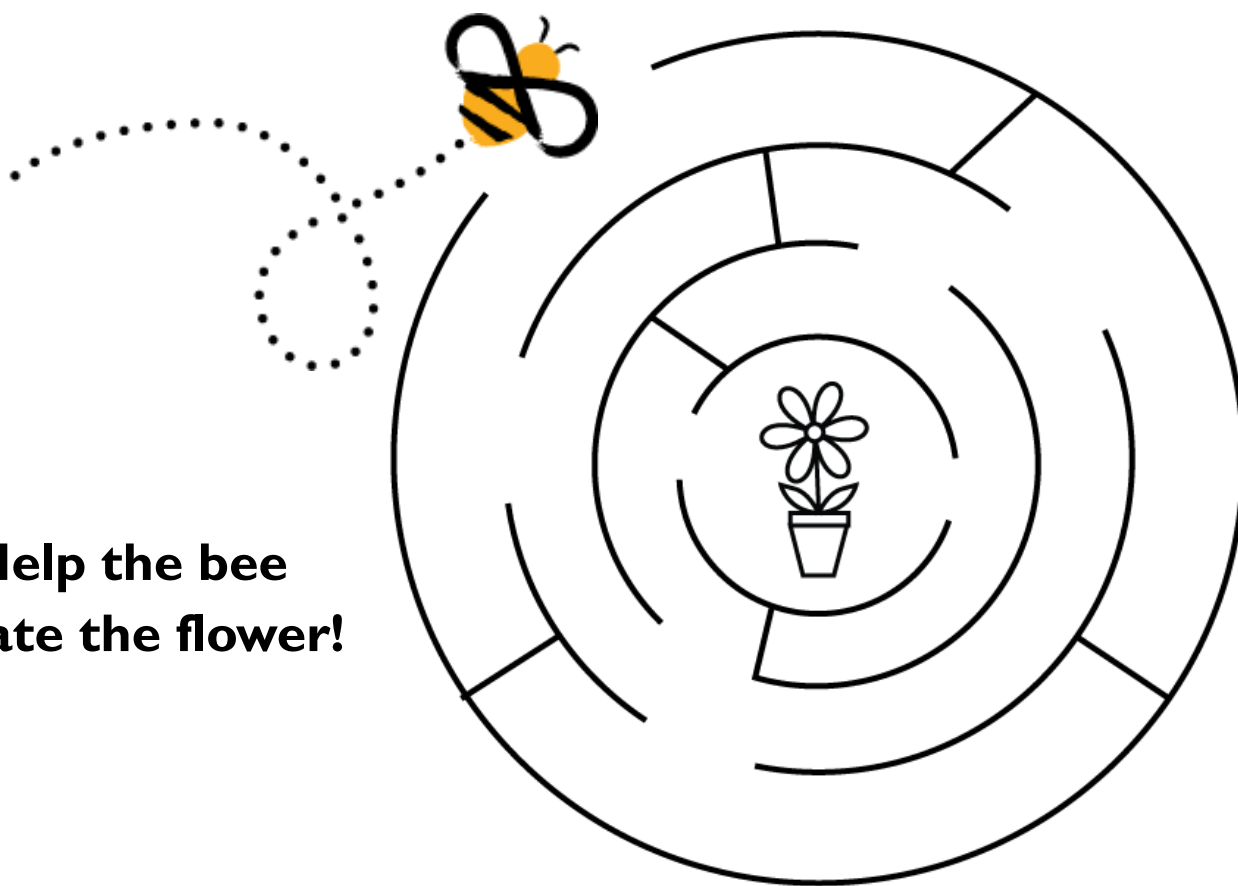


The following is help for families and advocates of children with special needs for special education regulations and the complaint system:

- ♦ The Special Education Consult Line - 1-800-879-2301 - A service of the PA Department of Education, Bureau of Special Education, Division of Compliance
- ♦ The Education Law Center - 215-238-6970 or www.elc.pa.org

Local Autism Task Force Meetings are held every third Thursday of the month at the Lehigh County Government Center, 17th Street, Allentown, PA 18101 at 6:00 pm. These meetings try to focus on issues that affect all who are touched by autism. If you have any questions, please don't hesitate to contact Patricia Theodore at patriciatheodore@lehighcounty.org.

**Help the bee
locate the flower!**



Ben Yorgey Foundation



The Ben Yorgey Foundation passionately honors Ben’s legacy by raising funds for graduating high school students with intellectual disabilities across Lehigh Valley and beyond.

The Ben Event

The Ben Event is a family event held the 3rd weekend in July at Macungie Memorial Park in Macungie, PA. The purpose of the Ben Event is to generate funds for the Ben Yorgey Foundation. Since the first Ben Event held in July 2010, the foundation has given 168 awards to graduating high school students with intellectual disabilities, totaling over \$150,000.

To find out more, visit <https://heyiknowyou.org> or follow our Facebook page at <https://www.facebook.com/benyorgeyfoundation>

28th Annual CLSNCF Golf Tournament - June 22, 2021



The 28th CLSNCF Golf Tournament, presented by Carbon Lehigh Special Needs Children’s Foundation, in cooperation with the Carbon Lehigh Intermediate Unit #21, is scheduled for **Tuesday, June 22, 2021** at The Olde Homestead Golf Club, 6598 Route 309, New Tripoli, PA. Proceeds from the tournament support special needs children in recreational and educational activities.

If you are interested in more information, please visit our website at www.clsncf.org. The contact

person is Val Borman at 610-769-4111 x1159, email bormanv@cliu.org.



We are particularly interested in potential sponsors and have different levels of sponsorship available to suit any business.

Proceeds support special needs children in recreational and educational activities.

TOPSoccer Spring Session

The Lehigh Valley TOPSoccer Club is proud to offer a TOP Soccer program in the Spring, Fall, and Winter seasons. Lehigh Valley TOPSoccer Club is the only club in the Lehigh Valley dedicated 100% to offering the game of soccer to children with special needs. TOPSoccer is open to children with disabilities.



What Is TOPSoccer?

The Outreach Program for Soccer—TOPSoccer—is a community-based training and team placement program for young athletes with Autism Spectrum Disorder, Down Syndrome, or Cerebral Palsy. The program provides meaningful learning, development, and physical participation opportunities to young athletes through the game of soccer.

The Lehigh Valley TOPSoccer Club was founded by the parent of a child with special needs who felt that the existing soccer programs in the Lehigh Valley did not even come close to meeting the needs of aspiring players with special needs.

What are the Key Elements of the Program?

- Fun! Fun! Fun!
- PARENT INVOLVEMENT
- Community support – monetary and non-monetary
- Volunteers willing to work with children
- Oodles of patience
- ‘Buddy’ system: some players paired with a buddy
- Placement of players primarily by ability, not age
- Emphasize ability, not disability
- Involve players and provide meaningful experience
- Dependability of coaches

Lehigh Valley TOPSoccer Club

Program Founder/Coordinator

C.B. Ananthan

610-391-1812

administrator@lvtopsoccer.org

<http://www.lvtopsoccer.org>

Mail Registration Form to:

1350 Buck Trail Road

Allentown, PA 18104

Who Can Enroll?

TOPSoccer is open to all children in the Lehigh Valley (Lehigh, Northampton, and Carbon counties) with Autism Spectrum Disorder, Down Syndrome, or Cerebral Palsy.

When Is It?

TOPSoccer will run in the spring from April to mid-June and in the fall from Sep to mid-November following regular soccer season schedules.

When and Where Is TOPSoccer Played?

We play on Saturday afternoon from 3pm to 4pm at the Lehigh County Soccer fields in South Whitehall Township (youth fields 1, 2, and 3). The address of the Lehigh Country Soccer fields is: 4238 Walnut Street, Allentown, PA 18104

How Do I Register My Child?

Print the registration form located at <http://www.lvtopsoccer.org> and follow instructions to register.

How Can I Help?

The TOPSoccer program exists for athletes to achieve, develop, and compete according to their abilities. We need volunteers to make this a reality for these children. Get involved!

Miracle League of the Lehigh Valley

Baseball Team: Outdoor baseball on our state-of-the-art and fully accessible field takes place from April to October broken up into Spring and Fall Seasons. We have weekend games as well as night games under the stadium lights! Our baseball program is non-competitive, so everyone gets to bat and everyone goes around the bases, regardless of ability. We do offer several scheduled competitive games throughout the season for players who want to work on their skills! **Fill out a Baseball Registration Form at mllv.org.**

Cheer Team: We offer a cheerleading program for those that wish to try their hand at rallying the crowd. Cheerleading is open to girls and boys of all abilities. Cheerleading is excellent for helping self-confidence and for making new friends. Our cheer coach will assist them in learning organized cheers and they will even be featured in between innings for special performances! **Fill out a Cheerleader Registration Form at mllv.org.**

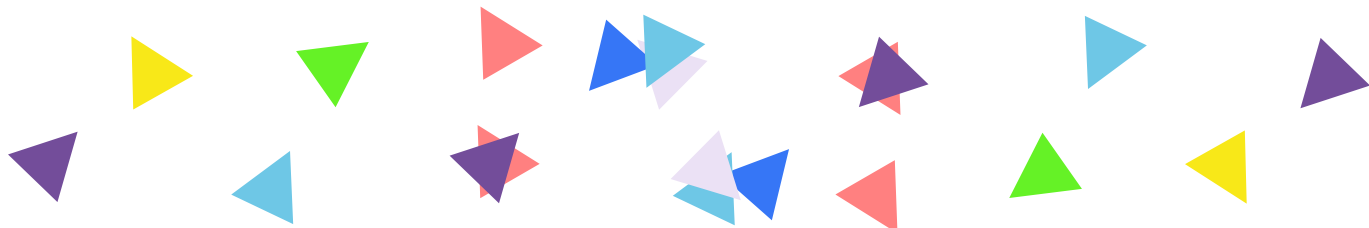
Activities: Everyone who is registered for baseball or cheerleading is automatically registered in our activities program! Not interested in baseball or cheerleading, but still want to be involved in year-round activities? That's okay! We have a membership just for you! Our activities membership is a discounted rate for those that want to be part of our Miracle League family without playing ball. Our activities run all year long and we have a wide variety of FREE, inclusive events. **Fill out an Activity Membership Registration Form at mllv.org.**



Call or email for more information:

610-769-2096

info@miracleleaguelv.org



Activities Membership includes:

**Bowling
Annual Gala
Basket Bingo
Talent Show and more!**

**Cost: \$20 per child per year
(fee is waived if signed up for
soccer or cheerleading)**



Pennsylvania Premise Alert System

The Premise Alert System was created in 2004 by Susan F. Rzucidlo and Police Chief Kevin McCarthy, Sr., to provide a uniform method to alert first responders to the special needs of individuals in their community and support families and individuals with disabilities, challenges, or complex medical diagnosis in the event of a crisis. It was the first system in the nation that connected families and individuals directly to the police serving their community. By providing first responders with advance knowledge, it allows for quick and educated responses during crises, evacuations, and disasters. The service is provided free of charge. Information and resources can be found at www.papremisealert.com or by emailing SPEAKsusan@gmail.com.



Pennsylvania Yellow Dot Program

Pennsylvania's Yellow Dot Program was created to assist citizens in the "golden hour" of emergency care following a traffic accident when they may not be able to communicate their needs themselves. Placing a yellow dot in your vehicle's rear window alerts first responders to check your glove compartment for vital information to ensure you receive the medical attention you need.

The program is a cooperative effort among the Pennsylvania Departments of Transportation, Health and Aging, the Pennsylvania State Police, the Pennsylvania Turnpike Commission, and First Responders and local law enforcement.

How does it work?

Participants complete a personal information form, which includes the participant's name, contact information, emergency contact information, medical history, and medications, allergies and the participant's doctors' names. A photo – showing only the participant's head and shoulders – is then taped to the front of the completed information sheet.

The yellow dot decal provided in the program kit is placed in the lower left corner of the participant's vehicle's rear windshield. The decal should be no higher than 3 inches from the bottom of the windshield. This decal alerts first responders that vital information can be found in the vehicle.

Place the completed information sheet, with the attached picture, into the Yellow Dot folder, and then place the folder into the vehicle's glove box.

<http://www.yellowdot.pa.gov/>



Best Buddies

We are promoting **Best Buddies** for the upcoming school year. Best Buddies seeks to make mutually rewarding friendship matches between individuals with intellectual disabilities and local college students. In Northampton County, the participating colleges are Lehigh University and Lafayette College. Remember, previous participants must reapply each year.



Are you a new applicant? Ideally, participants should be between the ages of 18 and 35 years old and be able to provide their own transportation. This is important because very few college students can provide it. Participants must also be free of aggressive or inappropriate behaviors that could jeopardize a friendship.

Online registration at www.bestbuddiesonline.org is strongly preferred over a hard copy. Returning buddies only need to complete the consent form. Newcomers should select Membership Application, choose their college, and then complete the application.

If you have any questions, please contact:

Jessica McKenty at jmckenty@arcoflehighnorthampton.org, 610-849-8076 ext. 330

Bob Madden at bmadden@arcoflehighnorthampton.org, 610-849-8076 ext. 317

There is no guarantee that all applicants can be matched, but we'll try. A great deal depends on college recruitment efforts. We try to make based on same gender, shared interests, and location. If a 1:1 match cannot be made, you may still participate in the monthly group activities.

CLIU Annie Sullivan Award - Nominate a Professional Today!

The CLIU is participating in the Annie Sullivan Award program, sponsored by the Pennsylvania Association of Intermediate Units. This award, named for Helen Keller's teacher and friend, honors an educator who exemplifies caring involvement with students with disabilities and helps others in our schools and the community to understand and accept students with disabilities. This award is open to any CLIU employee, and is intended to recognize those individuals who have superseded the general expectations of their employment.

To acquire a nomination form, please visit our webpage at www.cliu.org - go to Departments — Special Programs and Services — Annie Sullivan Award Nomination. You can also contact Kelly Danner at dannerk@cliu.org or 610-769-4111, ext. 1218.

Volunteers Needed

The Carbon Lehigh Intermediate Unit #21 is in need for volunteers to act as Surrogate Parents for students who do not have a guardian available to act on their behalf. Volunteers typically will attend IEP or ER meetings, and act in place of a parent or guardian in making school-related decisions. This is a service that the CLIU #21 provides for students who attend any of the 14 districts within the Carbon and Lehigh Counties.

If you have time during the day, and want to help meet the needs of a child in your area, please call or email Steve Hawkes or Amy Snyder. They would be glad to answer any questions you have.

Steve Hawkes 610-769-4111 ext. 1660

hawkes@cliu.org

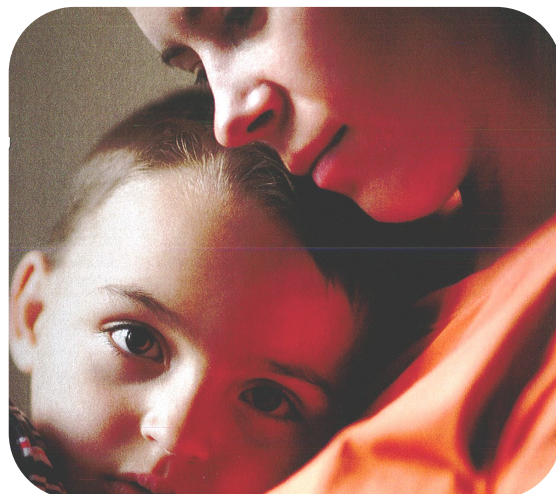
Lehigh County Surrogate Parent Coordinator

Natalie Bojko 610-769-4111 ext. 1663

bojkon@cliu.org

Carbon County Surrogate Parent Coordinator

when life happens, help is available



DIAL 2-1-1 GET CONNECTED. GET HELP.

2-1-1 is a toll-free hotline connecting the community to health and human services.

Free, confidential information and referral available 24/7:

Phone: 2-1-1 or 855-501-6785
Email: 211@uwlanc.org
Web: www.pa211east.org



Aging Services
Child & Youth Services
Counseling
Education/Training
Food/Shelter/Clothing

Health Services
Parenting
Substance Abuse
Support Groups
Volunteer Opportunities

and much more!

**YOUR COMMUNITY HELP LINE:
PENNSYLVANIA 2-1-1 EAST**



Community Resources for Families & Children in the Lehigh Valley

General Information

Childline	800-932-0313
Lehigh County	
Information & Referral	610-782-3200
Crisis Intervention	610-782-3127
Northampton County	
Information & Referral	610-829-4800
Crisis Intervention	610-252-9060
	610-559-3270
Social Security	1-800-772-1213

Advocacy and Support

Allentown City Health Bureau	610-437-7760
The Arc	610-849-8076
ARCH	610-573-2500
Bethlehem City Health Bureau	610-865-7083
Center for Independent Living	610-770-9781
Consult Line	800-879-2301
Disability Rights Pennsylvania	800-692-7443
Education Law Center	215-238-6970
Elks Nurse	610-365-1426
Office of Vocational Rehabilitation	610-821-6441
PA Office for Dispute Resolution	800-879-2301
Parent Education Network	800-522-5827
Project Child	610-954-9561

Behavioral Health Services (Provider 50)

Intake & Referral	
Lehigh County	610-782-3200
Northampton County	610-829-4800
Access Services	610-866-6667
ARCH	610-573-2500
Behavioral Health Associates	610-379-0067
Carbon-Lehigh IU#21	610-769-4111
Colonial IU#20	610-252-5550
Concern	610-691-8401
Glenn R. Koch & Associates	610-266-0610
Holcomb Behavioral Health	610-435-4151
KidsPeace	800-257-3223
New Story (aka Salisbury)	610-973-0970
Northwestern Human Services	610-866-8331
PA Mentor	610-867-3173
Penn Foundation	215-257-6551
Progressions	610-266-2656
Team Counseling Concepts	610-395-6322
Valley Youth House	610-954-9561

Child Care Resource and Referral

Early Learning Resource Center (ELRC)	610-437-6000 or 800-528-7222
Child Care Provider Search	www.dhs.pa.gov
	www.compass.state.pa.us

Child Health

Allentown City Health Bureau	610-437-7760
AmeriHealth Caritas	1-888-991-7200
Bayada Home Health Care	610-776-7000
Bethlehem City Health Bureau	610-865-7083
CHIP (Children's Health Insurance Program)	800-986-KIDS
HIPP (Health Insurance Premium Payment)	215-861-4155
Department of Public Welfare	
Lehigh County	610-821-6509
Northampton County	610-250-1700
Easton Hospital	610-250-4000
Epic Agency	610-432-7403
Gateway Health Plan	1-800-392-1147
Good Shepherd Pediatrics	610-776-3578
Good Shepherd Rehabilitation	1-888-447-3422
Lehigh Valley Hospital	610-402-8000
Magellan	1-866-238-2312
March of Dimes	610-814-7000
Birth Defects Foundation	
PA Department of Health	
Lehigh County	610-821-6770
Northampton County	610-250-1825
Sacred Heart Hospital	610-776-4500
Shriner's Hospital (Philadelphia)	215-430-4000
	(toll-free) 800-281-4050
Shriner's Burn Center (Boston)	800-255-1916
St. Luke's University Health Network	
Allentown	610-628-8300
Bethlehem	484-526-4000
Community Health	484-526-2100
Visiting Nurse Assn.	484-526-1100
Anderson	484-503-3000

Counseling

Bethlehem Counseling Associates	610-865-8177
Catholic Charities	610-435-1541
Center for Integrative Psychotherapy	610-432-5066
Community Psychological Services	610-434-2431
Crime Victims Council	
Lehigh County	610-437-6610
24 Hour Hotline	610-437-6611
Northampton County	610-250-6313
Early Childhood	1-800-528-7222 x2328
Mental Health Consultations	
Hispanic American Organization	610-435-5334
Lehigh Valley Community Mental Health	610-691-4357
Olivewood Counseling	610-417-0463
Pinebrook Family Answers	610-432-3919

Community Resources for Families & Children in the Lehigh Valley, cont.

Developmental Pediatricians

Children's Specialized Hospital, (NJ)	888-244-5373
CHOP (Philadelphia)	800-879-2467
DuPont Hospital (Philadelphia)	800-416-4441
Geisinger Medical Center	800-275-6401
Good Shepherd, Pediatrics	610-776-3578
Einstein Hospital Develop. Medicine	215-456-7890
Hunterdon Medical Center-Child Devel. Ctr.	908-788-6396
Johns Hopkins Children's Center	410-955-2000
Penn State Children's Hospital	800-243-1455
Dr. Boosara Ratanawongsa ("Dr. Boo")	610-398-9898
St. Luke's Developmental Pediatrics	484-426-2542

Education Information Services

Community Services for Children, Inc. Head Start & Early Head Start	610-437-6000
Connect Information Services	800-692-7288
Mercy Special Learning Center	610-797-8242
Child Care Program Bethlehem School District	610-868-8501

Housing Assistance

Allentown Housing Authority	610-439-8678
Bethlehem Housing Authority	610-865-8300
Easton Neighborhood Center	610-253-4253
Easton Housing Authority	610-258-0806
Habitat for Humanity	610-776-7737
Lehigh County Housing Authority	610-861-0121
New Bethany Ministries	610-691-5602
Northampton County Housing Authority	610-759-8488
Pathways (Conference of Churches)	610-439-8653
Salvation Army Shelter	610-432-0128
Sixth Street Shelter	610-435-1490
Third Street Alliance for Women & Children	610-258-6271
Turning Point of Lehigh Valley	610-437-3369

Legal Services

Attorney Referral & Information Service	
Lehigh County	610-433-7094
Northampton County	610-258-6333
Lehigh Valley Legal Service	610-317-8757

Nutrition/Food Services

Allentown Area	610-821-1332
Ecumencial Food Bank Assistance Office (Food Stamps SNAP)	
Lehigh County	610-821-6503
Northampton County	610-250-1700
Casa Jeanette	610-432-2222
Central Moravian Food Bank	610-866-5661
Coplay Food Bank	610-262-6088
Nazareth Area Food Bank	610-365-8869
New Bethany Ministries	610-691-5602
Northampton Food Bank	610-262-8030
Northern Lehigh Food Bank	610-767-9525
Northeast Ministry	610-691-3355
Pennsylvania Hunger Action Center	717-525-9805
Penn State Cooperative Extension (Education Services)	
Lehigh County	610-391-9840
ProJeCt (Easton)	610-258-4361
Safe Harbor (Easton)	610-258-5540
Salvation Army	
Allentown	610-432-0129
Bethlehem	610-867-4681
Easton	610-258-9531
Trinity Episcopal Church Soup Kitchen	610-867-4741
WIC (Women, Infant & Children)	800-367-6347
Allentown	610-432-3455
Bethlehem	610-691-6491

Recreation/Therapeutic Activities

Twinkle Babies	610-838-7306
Easter Seals of Eastern PA	610-289-0114
Equi-Librium: Healing Through Horses	610-365-2266
Imagi Nation	610-841-5919
Live, Learn, & Play	610-797-5483
Music Therapy Associates	610-740-9890
Recreation & Leisure Line	1-800-986-4550
Soccer Tots Lehigh Valley	610-737-5098
The Miracle League	610-769-2096
Theraplay	215-804-1002
Top Soccer	www.topsoccer.us
VIA of the Lehigh Valley	610-317-8000

Community Resources for Families & Children in the Lehigh Valley, cont.

Support Groups/Hotlines

Aids Hotline 1-800-662-6080
 Angel 34 (Childhood Cancer) 610-533-1923
 ARCH 610-573-2500
 Lehigh Valley Autism Society 610-751-6532
 National Autism Society of America .. 800-3 AUTISM
 Bereavement Support Group 610-969-0330
 Brain Tumor Foundation of LV 267-272-2553
 Camelot for Children 610-791-5683
 Support Group
 Center for Vision Loss 610-433-6018
 Cleft Palate Foundation 1-800-242-5338
 Compassionate Friends of LV 610-837-7924
 (for Parents who have suffered the death of a child)
 Eastern PA 610-402-0184
 Down Syndrome Center
 Epilepsy Assoc. of SE PA 610-737-0613
 Guide by Your Side www.handsandvoices.org
 (supporting families of children who are deaf or hard of hearing)
 Healthy Baby Line 800-986-BABY
 (for pregnant women)
 Healthy Kids Line 800-986-KIDS
 Lauren's Hope Foundation 610-703-2423
 (Supports Children with Brain Injuries and Their Families)
 Lead Poisoning 800-440-LEAD
 Lehigh Valley Apraxia Support Group .. 215-850-7485
 Lehigh Valley Family ... www.lehighvalleyfamily.com
 Lilly's Hope Foundation 267-776-4673
 (Premature Birth)

Support Group/Hotlines Cont.

Macaroni Kids www.macaronikid.com
 (things to do locally)
 March of Dimes 610-814-7000
 Moms of Multiples www.mmlv.org
 Mothers of Twins Lehigh Valley www.lvmotc.org
 Muscular Dystrophy Assoc. 610-391-1977
 NAMI 610-882-2102
 PA Department of Health Line 1-877-PAHEALTH
 Parent to Parent of Pennsylvania 888-727-2706
 Pediatric Cancer www.pcflv.org 610-297-7292
 Foundation of LV
 Poison Control Center 1-800-222-1222
 Special Kids Network 800-986-4550
 Sugar Free Kids 610-969-3230
 (for children with diabetes & their families)

Transportation

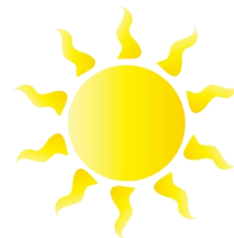
LANTA Metro Plus 610-776-7433
 VAST 610-432-3200

Community Resources for Families & Children is provided as a service to parents and professionals with an interest in Early Intervention. The Family & Early Intervention Partnership does not endorse any provider or service. This list is not all inclusive.

If you have a concern about your child's development call:

Children birth to 3 years old:	Northampton County - 610-829-4800
	Lehigh County - 610-782-3200
Children 3 to 5 years old:	Colonial Intermediate Unit - 610-849-0260
	Carbon/Lehigh Intermediate Unit - 610-769-4111

This information has been printed courtesy of Child Care Information Services, Inc., the CCIS of Northampton County, through funds provided by Lehigh and Northampton County Offices of Early Intervention.



CARBON COUNTY CHILDREN’S TEAM RESOURCE DIRECTORY

EMERGENCY SERVICES and HOTLINES:

General Emergency	911
Child Abuse Hotline (ChildLine).....	1-800-932-0313
Child Abuse Prevention (ChildHelp).....	1-800-4-A-CHILD
Department of Health Hotline.....	www.health.state.pa.us
Domestic Violence.....	1-800-424-5600
Drug and Alcohol Hotline.....	1-866-824-3578
Lead Poisoning.....	1-800-440-5323
MH/DS Crisis Intervention Hotline.....	1-800-338-6467
Poison Control.....	www.aapcc.org
Victims Resource Center.....	www.vrcnepa.org

YOUR DOCTOR..... _____

YOUR HOSPITAL..... _____

EMERGENCY FRIEND/NEIGHBOR..... _____

HEALTH INSURANCE NUMBER..... _____

Carbon County Children’s Team
is offering **FREE** developmental screenings for young children.

Contact your local Early Intervention Program

For children **younger than 3 years old** call:
1-570-420-1900

For children **older than 3 years old** call:
1-800-223-4821

Don’t wonder...get answers...call now!!!

Carbon County Children's Team Resource Directory, cont.

CHILD CARE/PRE-SCHOOL:

Carbon County Child Care Information Services	1-570-325-2226 or 1-888-212-0483
Carbon County Pathstone/Head Start/PA Pre-K Counts.....	1-610-377-3214
Carbon County Right From the Start	1-570-325-2771
Keystone STARS/ Northeast Regional Key.....	1-610-437-6000 or 1-800-528-7222
PA Pre-K Counts (Jim Thorpe Area).....	1-570-325-3691

EARLY INTERVENTION:

Carbon County Early Intervention Department (Birth to 3)	1-610-377-0773 x3723
Carbon Lehigh IU#21 Early Intervention (Preschool) www.cliu.org	1-800-223-4821 x1256

FAMILY RESOURCES:

Al-Anon/Alateen	www.pa-al-anon.org	1-800-344-2666
Alcoholics Anonymous.....	www.district49aa.org	1-800-640-7545
American Red Cross	www.redcrosslv.org	1-610-377-2100
Area Agency on Aging.....	www.carboncounty.com/aging.htm	1-610-824-7830 or 1-800-441-1315
Autism Resource Community Hub of Lehigh Valley		1-866-670-2724
Autism Society of America.....	www.asalehighvalley.org	1-610-778-9212
Autism Speaks.....	www.autismspeaks.org	1-888-288-4762
Better Business Bureau of Northeast Pennsylvania		1-570-342-9129
Big Brothers - Big Sisters		1-570-455-6742
Breastfeeding Support Group.....	www.facebook.com/mamamilkcafe	
Camelot for Children	www.camelotforchildren.org	1-610-791-5683
Carbon County Children and Youth		1-570-325-3644
Carbon County Commissioner's Office.....		1-570-325-3611
Carbon County Community Transit/The LYNX		1-800-990-4287
Carbon County Environmental Center.....	www.carboneec.org	1-570-645-8597
Carbon County Right From the Start		1-570-325-2771
Carbon County Safe Kids.....	www.pasafekids.org	1-570-325-2788 or 1-800-683-5100
Carbon-Monroe-Pike County Drug and Alcohol		1-610-377-5177
Care Net of Carbon County.....	www.carenetcarbon.org	1-610-379-0411 or 1-800-395-4357
Career Link	www.carboncareerlink.org	1-570-325-2701
Catholic Social Charities.....		1-570-628-0466
CHADD (Children & Adults with Attention Deficit Disorder).....	www.chadd.org	1-800-233-4050
Consumer Protection Bureau		1-800-441-2555
Domestic Violence Service Center		1-800-424-5600
Eastern PA Down Syndrome Center.....	www.epdsc.net	1-610-402-0184
Family Promise of Carbon County		1-610-379-4757
Game Commission NE Field Division Headquarters		1-570-675-1143
Healthy Baby.....	www.helpinpa.state.pa.us	1-800-986-BABY
Jewish Family Services.....		1-610-821-8722
LEARN-Local Education & Resource Network..	www.carboncountyece.com	1-570-325-2771
Mothers of Preschoolers.....	www.bluemountaincommunitychurch.org	1-610-826-8402
Narcotics Anonymous.....		1-888-251-2426
National Adoption Center	www.adopt.org	1-800-862-3678
NHS Human Services	www.nhsonline.org	1-570-424-9229
North Penn Legal Services.....	www.northpennlegal.org	1-877-953-4250
PA Breastfeeding Coalition.....	www.pabreastfeeding.org	1-641-715-3900 x663535
PA Recreation & Leisure Line		1-800-986-4550
Parent Education Network	www.parentednet.org	1-800-522-5827
Parent to Parent	www.parenttoparent.org	1-570-251-3208 or 1-888-727-2706
PBA Lawyer Referral Service.....	www.pabar.org	1-800-692-7375
Pennsylvania Adoption Exchange.....	www.adoptpakids.org	1-800-585-SWAN
Pocono Mountains Vacation Bureau.....	www.800poconos.com	1-570-325-3673
Products Safety Commission	www.cpsc.gov	1-800-638-2772
PSU Cooperative Extension-PROSPER	www.prevention.psu.edu	1-570-325-2788
Right to Education Task Force.....		1-610-769-4111 or 1-800-223-4821
Second Blessings Victim Resource Center		1-610-377-2834

Carbon County Children's Team Resource Directory, cont.

Smoking Quit Line.....	1-877-724-1090
Special Kids Network	1-800-986-4550
Special Olympics	www.specialolympicscarboncounty.com 1-570-325-3611
Suicide Prevention Lifeline.....	www.suicidepreventionlifeline.org 1-800-273-8255
Super Cupboard.....	1-570-427-4366
SWAN (Statewide Adoption Network)	www.adoptpakids.org 1-800-585-SWAN
Valley Wide Help.....	

FINANCIAL AND MATERIAL ASSISTANCE:

Carbon County Action Committee for Human Services....	www.ccachs.com	1-610-377-6400
Carbon County Assistance Office	www.dhs.pa.gov	1-610-577-9020 or 1-800-314-0963
LIHEAP (Cash).....		1-610-577-9073
LIHEAP (Crisis)		1-866-410-2093
Social Security Administration	www.socialsecurity.gov	1-800-772-1213
WIC.....	www.mfhs.org	1-610-377-6097

HEALTH AND MEDICAL RESOURCES:

Carbon County Assistance Office	www.dhs.pa.gov	1-610-577-9020 or 1-800-314-0963
Carbon County Children's MS/DS	www.cmpmhds.org	1-610-377-0773 or 1-800-338-6467
Carbon County Medical Society	Dr. Ahmed M Hasan, M.D	1-610-826-6255
Carbon County State Health Center.....	www.pa.gov	1-570-325-6106 or 1-877-PA-HEALTH
Geisinger St. Luke's Hospital – Orwigsburg	www.slhn.org	1-866-785-8537
Janet Weis Children's Hospital	www.geisinger.org	1-570-271-6211
Lehigh Valley Hospital - Cedar Crest, Muhlenberg, 17 th Street ..	www.lvhn.org	1-610-402-8000
Lehigh Valley Reilly Children's Hospital.....	www.lvhn.org	1-610-402-8000
LVHN ExpressCARE-Blakeslee	www.lvhn.org	1-570-355-7111
LVHN ExpressCARE-Lehighton	www.lvhn.org	1-484-464-9508
LVHN ExpressCARE-Palmerton	www.lvhn.org	1-610-900-4950
LVHN Health Center at West End.....	www.lvhn.org	1-570-992-7777
Maternal and Family Health Services	www.mfhs.org	1-800-367-6347
PA Elks Home Service Program	www.paelkshomeservice.org	1-570-728-0937 or 1-814-475-2554
St Luke's Guaden Huetten.....	www.slhn.org/lehighton	1-610-377-1300 or 1-866-STLUKES
St. Luke's Care Now - Jim Thorpe	www.slhn.org	1-570-325-2400
St. Luke's Care Now - Lehighton	www.slhn.org	1-570-645-1000 or 1-866-STLUKES
St. Luke's Care Now - Palmerton	www.slhn.org	1-484-822-5320
St. Luke's Care Now - West Penn	www.slhn.org	1-570-645-1520
St. Luke's Miners Health Center - Lansford Rural Health Primary Care..	www.slhn.org	1-272-639-5020
St. Luke's Miners Health Cntr - Nesquehoning Federal Rural Health Clinic	www.slhn.org	

1-570-645-1960 DEVELOPMENTAL PEDIATRICIANS:

Children's Hospital of Philadelphia.....	www.chop.edu	1-800-879-2467
Geisinger Medical Center	www.geisinger.org	1-800-275-6401
Good Shepherd Pediatrics.....		1-610-776-9578
Hershey Medical Center.....	www.pennstatehershey.org	1-800-243-1455
St. Christopher's Hospital for Children	www.stchristophershospital.com	1-215-427-5000
Children's Specialized Hospital (New Jersey)	www.childrens-specialized.org	1-888-244-5373
DuPont Hospital (Philadelphia)	www.nemours.org	1-800-416-4441
Hunterdon Medical Center.....	www.hunterdonhealthcare.org	1-908-788-6396
Johns Hopkins Children's Center	www.hopkinsmedicine.org	1-410-955-5000
Lehigh Valley Health Network (Dr. Janvier).....	www.lvhn.org	1-610-395-4300
St. Luke's Developmental Pediatrics (Dr. Straka)....	www.slhn.org	1-484-526-5580
Pediatric Neurology of the Lehigh Valley (Dr. Boosara)	www.doctorboo.com	1-610-398-9898

Carbon County Children’s Team Resource Directory, cont.

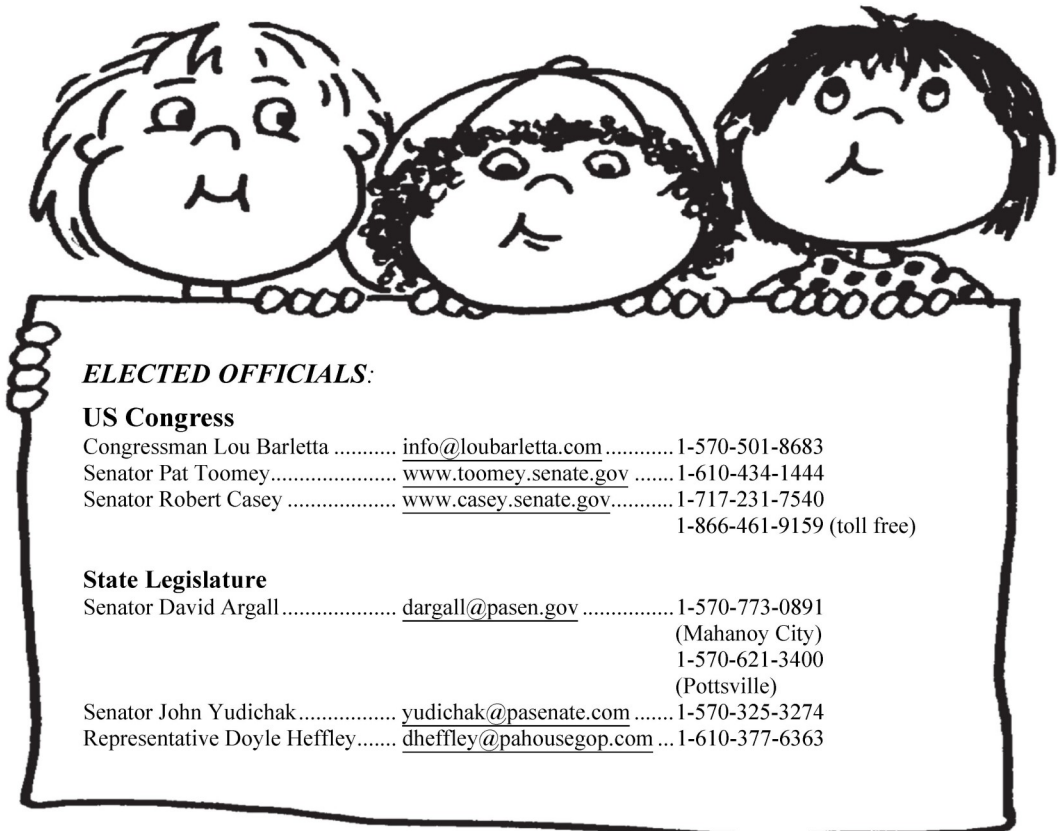
BEHAVIORAL HEALTH:

Concern	1-610-691-8401 x2259
ABA Support Services	1-610-365-8373
Matrix Behavioral Solutions	1-570-242-2683
Step by Step	1-570-904-1542
Access Services - Bethlehem	1-610-866-6667
Access Services - Orwigsburg	1-570-366-1154
Behavioral Health Associates	1-610-379-9304
PA Mentor	1-610-867-3173
Pathways	1-570-424-6221
Youth Advocacy Program	1-610-681-2488
Progressions	1-610-266-2656
Bright Beginnings	1-570-281-6341

SCHOOLS/EDUCATION:

Carbon County Alternative High School Education Program	1-570-325-9364	
Carbon Career and Technical Institute (CCTI) www.carboncti.org	1-570-325-3682	
CCTI - Adult Education Center	www.carboncti.org/adult-education	1-570-325-4140
Carbon Lehigh Intermediate Unit #21	www.cliu.org	1-800-223-4821
Jim Thorpe Area School District	www.jimthorpsd.org	1-570-325-3691
LCCC - SHINE 21 st Century Afterschool Program ... www.shineafterschool.com	1-570-325-2771	
Lehigh Area School District	www.lehighton.org	1-610-377-4490
Lehigh Carbon Community College (Carbon Center) .. www.lccc.edu	1-570-669-7010	
Palmerton Area School District	www.palmerton.org	1-610-826-7101
Panther Valley Area School District	www.panthervalley.org	1-570-645-4248
Weatherly Area School District	www.weatherlysd.org	1-570-427-8681

Go Online! Find Child Care and Other Early Learning Programs Near You:
<https://www.compass.state.pa.us/Compass.web/ProviderSearch/Home#/BasicSearch>



ELECTED OFFICIALS:

US Congress

Congressman Lou Barletta	info@loubarletta.com	1-570-501-8683
Senator Pat Toomey	www.toomey.senate.gov	1-610-434-1444
Senator Robert Casey	www.casey.senate.gov	1-717-231-7540
		1-866-461-9159 (toll free)

State Legislature

Senator David Argall	dargall@pasen.gov	1-570-773-0891
		(Mahanoy City)
		1-570-621-3400
		(Pottsville)
Senator John Yudichak	yudichak@pasenate.com	1-570-325-3274
Representative Doyle Heffley	dheffley@pahousegop.com ...	1-610-377-6363

Notice of Special Education Services Family Educational Rights and Privacy Act (FERPA) Notice

The Following Carbon & Lehigh School Districts & Charter Schools and Carbon Lehigh Intermediate Unit #21 Provide Special Education Services to Special Needs Children

Allentown School District	Parkland School District	Arts Academy Charter Middle School
Catasauqua Area School District	Salisbury Township School District	Arts Academy Elementary Charter School
East Penn School District	Southern Lehigh School District	Circle of Seasons Charter School
Jim Thorpe Area School District	Weatherly Area School District	Executive Education Academy
Lehigh Area School District	Whitehall-Coplay School District	Innovative Arts Academy
Northern Lehigh School District	Carbon Career and Technical Institute	Lincoln Leadership Academy
Northwestern Lehigh School District	Lehigh Career and Technical Institute	Roberto Clemente Charter School
Palmerton Area School District	Nonpublic/Private Schools	Seven Generations Charter School
Panther Valley School District	Early Intervention	

The public school districts of Carbon and Lehigh County, Pennsylvania, and the Carbon-Lehigh Intermediate Unit #21 (“the Carbon/Lehigh County school entities”), provide special education and related service to resident children with disabilities who are ages three through twenty-one. The purpose of this notice is to briefly describe (1) the types of disabilities that might qualify the child for such programs and services, (2) the special education programs and related services that are available, (3) the process by which each of the Carbon/Lehigh County School entities screens and evaluates such students to determine eligibility, and (4) the special rights that pertain to such children and their parents or legal guardians. **For a full detailed version of this notice, please visit www.cliu.org.**

Types of Disabilities Served

Under the Individuals with Disabilities Education Act, commonly referred to as the “IDEA,” children qualify for special education and related services if they have one or more of the following disabilities and, as a result, demonstrate a need for special education and related services:

- (1) Intellectual disabilities
- (2) Hearing impairments including deafness
- (3) Speech or language impairments
- (4) Visual impairments, including blindness
- (5) Serious emotional disturbance
- (6) Orthopedic impairments
- (7) Autism, including pervasive developmental disorders
- (8) Traumatic brain injury
- (9) Other health impairment
- (10) Specific learning disabilities
- (11) Multiple disabilities
- (12) For preschool age children, developmental delays

Programs and Services Available

- (1) Regular class placement with supplementary aides and services provided as needed in that environment
- (2) Regular class placement for most of the school day with itinerant service by a special education teacher either in or out of the regular classroom for 20 percent or less of the school day
- (3) Regular class placement for some of the school day with supplemental instruction provided by a special education teacher for more than 20 percent, but less than 80 percent of the school day
- (4) Instruction provided by a special education teacher for more than 80 percent of the school day
- (5) Special education services, with or without regular classroom placement, either in an alternative public school setting or in a private school, treatment facility, hospital, detention center or prison, on a day or residential basis.

Location of Services

- (1) The public school the child would attend if not disabled
- (2) An alternative regular public school either in or outside the school district of residence
- (3) A special education center operated by a public school entity
- (4) An approved private school or other private facility licensed to serve children with disabilities
- (5) A residential school
- (6) An approved out-of-state program
- (7) The home

Types of Service Available

- (1) Learning support, for students who primarily need assistance with the acquisition of academic skills
- (2) Life skills support, for students who primarily need assistance with development of skills for independent living
- (3) Emotional support, for students who primarily need assistance with social or emotional development
- (4) Deaf or hearing impaired support, for students who primarily need assistance with compensatory skills to address deafness
- (5) Blind or visually impaired support, for students who primarily need assistance with compensatory skills to address blindness,
- (6) Physical support, for students who primarily require physical assistance in the learning environment
- (7) Autistic support, for students who primarily need assistance in the areas affected by autism spectrum disorders
- (8) Multiple disabilities support, for student who primarily need assistance in multiple areas affected by their disabilities.

Screening

All Carbon/Lehigh County School entities undertake screening activities before referring students for a multidisciplinary team evaluation. Screening activities could involve Multi-Tiered System of Supports, commonly referred to as the “MTSS,” or an alternative screening process. Regardless of the particular screening method employed, the screening process must include (1) periodic vision and hearing assessments by the school nurse as mandated by the School Code and (2) screening at reasonable intervals to determine whether all students are performing based on grade-appropriate standards in core academic subjects. If screening activities produce little or no improvement after a reasonable period of intervention or remediation, the child will then be referred for a multidisciplinary team evaluation. Parents who wish to request screening and evaluation for their child may do so by contacting the principal or counselor in their child’s school building.

Multidisciplinary Team Evaluations

Carbon/Lehigh County School entities must conduct a multidisciplinary team evaluation of every child who is thought to have a disability. The multidisciplinary team is a group of professionals who are trained in and experienced with the testing, assessment, and observation of children to determine whether they have disabilities and, if so, to identify their primary educational strengths and needs. Parents are also members of the multidisciplinary team. Carbon/Lehigh County School entities must reevaluate school-age students receiving special education services every three years and must reevaluate children with mental retardation and pre-school-age children receiving special education services every two years. Parents may request a multidisciplinary team evaluation of their children at any time. They must do so in writing. Every public school has a procedure in place by which parents can request an evaluation. For information about each Carbon/Lehigh County School entity’s procedures applicable to your child, contact the elementary, middle, or high school which your child attends.

Special Rights and Protections of Children with Disabilities and their Parents/Legal Guardians

State and federal law affords many rights and protections to children with disabilities and their parents. A summary of those rights and protections can be found in the full detailed version of this notice, located at www.cliu.org. Interested persons may obtain a complete written summary of the rights and protections afforded by the law, together with information about free or low cost legal services and advice, by contacting their school district’s special education or student services department at the address and telephone number listed at the end of this notice.

Preschool Children with Special Needs

Children preschool age three through five, are served by the Carbon Lehigh Intermediate Unit in a variety of home and school-based settings that take into account the chronological and developmental age and primary needs of the child. As with school age programs, preschool programs must ensure that to the maximum extent appropriate, children with disabilities are educated with non-disabled peers at no cost to the parent. Parents/guardians of these children may obtain information about screening, evaluation, programs, therapy, parent involvement, and referral to community agencies by calling or writing the Carbon Lehigh Intermediate Unit, Early Intervention Services, 4210 Independence Drive, Schnecksville, Pennsylvania 18078-2580. The telephone number for the Early Intervention Program is (610) 769-4111 ext. 1256.

Nonpublic Schools/Private Schools

Duties owed to students with disabilities enrolled in private schools by their parents are limited to child find activities and a genuine offer of a Free Appropriate Program of Education (FAPE) from the school district of residence. Students unilaterally enrolled in private schools by their parents have a right to participate in services; however, no private school child with a disability is entitled to any particular service or to any amount of service. (300.455(2)) Parents/guardians of these children may obtain information by contacting the Carbon Lehigh Intermediate Unit, Non-Public/Private Schools Supervisor, 4210 Independence Drive, Schnecksville, Pennsylvania 18078-2580. The telephone number for the Non-Public/Private Schools Supervisor is (610) 769-4111 ext. 1625.

Destruction of Information Concerning Students with Disabilities Who are Receiving or Who have Received Special Education Services or Who Were Evaluated for Such Services

The public school districts of Carbon and Lehigh County, and the Carbon-Lehigh Intermediate Unit #21 are required to notify parents and guardians when personally-identifiable information concerning students with disabilities, or students who were evaluated to determine the need for special education services, is no longer needed to provide educational services to the student ("no longer educationally relevant"). The District considers certain records to be no longer educationally relevant based on the following schedule:

- (1) All test protocols and other raw data used as part of an evaluation or reevaluation will be considered no longer educationally relevant at the conclusion of the school year during which the evaluation or reevaluation has occurred.
- (2) All IEP progress monitoring data will be considered no longer educationally relevant as of the date on which such data are reported to parents or guardians in a progress report or at the conclusion of the school year during which such data are collected, whichever is sooner.
- (3) All notes of IEP team members and draft IEPs, if any, will be considered no longer educationally relevant as of the date that the IEP to which such notes of drafts pertain is issued to the parents or guardian.
- (4) All Permissions to Evaluate or Reevaluate, Invitations to IEP or Other Meetings and related documents, Evaluation or Reevaluation Reports, IEPs, Notices of Recommended Educational Placement and related documents, Complaint Investigation Reports, Mediation Agreements, and Hearing Officer Decisions will be considered no longer educationally relevant at the conclusion of the sixth year from the date on which the student graduates from High School, ceases residency in the District for reasons other than placement in a hospital or treatment facility, or attains age twenty-one, whichever is sooner. The CLIU considers the records maintained by their agency to be considered no longer educationally relevant at the conclusion of the sixth year from the date on which the student turns age 21.
- (5) Parents and guardians have the right to request, in writing, that the District/IU destroy any or all records deemed no longer educationally relevant. The District/IU, at its discretion, may also destroy such records without further notice to parents, guardians, or students.

Questions regarding services for special needs children can be addressed to:**Allentown**

Mr. Brian Siket (484) 765-4070

Catasauqua

Ms. Shelley Keffer (610) 264-5571

East Penn

Dr. Linda Pekarik (610) 966-8354

Jim Thorpe

Mrs. Sandra Michalik (570) 325-3691

Lehighton

Ms. Samantha Kistler (610) 377-4490

Northern Lehigh

Ms. Michele Dotta (610) 767-9849

Northwestern Lehigh

Ms. Andrea Edmonds (610) 298-8661

Palmerton

Ms. Suzanne Rentschler (610) 826-7101

Panther Valley

Dr. Tammy Chrin (570) 645-0386

Parkland

Ms. Brenda DeRenzo (610) 351-5559

Salisbury Township

Ms. Tracey Jacobi (610) 797-2062

Southern Lehigh

Mrs. Andria Buchman (610) 282-3121

Weatherly

Ms. Colleen Genovese (570-427-8681)

Whitehall-Coplay

Ms. Brooke Clary (610) 439-1431

Carbon Career & Technical Institute

Ms. Christine Trovato (570) 325-3682

Lehigh Career & Technical Institute

Ms. Kristin Jachowicz (610) 799-1326

Early Intervention

Mrs. Allison Haberman/Mr. Matthew Martucci (610) 769-4111

Nonpublic/Private Schools

Ms. Maryalice Grogan (610) 769-4111

Youth Forestry Camp

Mr. Dan Fisher (570) 443-0231

Arts Academy Charter Middle School

(Salisbury Township SD)

Dr. Kathleen Adolt-Silva (610) 351-0234

Arts Academy Elementary Charter School

(Allentown SD)

Ms. Michele Banks (610) 841-4560

Circle of Seasons

(Northwestern Lehigh SD)

Ms. Alison Saeger (610) 285-6267

Executive Education Academy

(Allentown SD)

Ms. Sarah Evans (610) 841-7044

Innovative Arts Academy Charter School

(Catasauqua SD)

Mr. Doug Taylor (610) 403-2787

Lincoln Leadership Academy

(Allentown SD)

Ms. Sandra Figueroa-Torres (484) 860-3300

Roberto Clemente

(Allentown SD)

Ms. Alyssa Newman (610) 439-5181

Seven Generations

(East Penn SD)

Ms. Amanda Cossman (610) 421-8844





Helping Children Learn

Annual Notification of Rights under FERPA for Elementary and Secondary Schools

The Family Educational Rights and Privacy Act (FERPA) affords parents and students who are 18 years of age or older ("eligible students") certain rights with respect to the student's education records. These rights are:

1. The right to inspect and review the student's education records within 45 days after the date the LEA (Local Education Agency) receives a written request for access, or before any due process hearing or IEP team meeting, whichever is sooner.

Parents or eligible students should submit to the appropriate LEA official a written request that identifies the records they wish to inspect. The LEA official will make arrangements for access and notify the parent or eligible student of the time and place where the records may be inspected. If, upon inspection, a parent or eligible student requests copies of such records, a fee may be charged.

2. The right to request the amendment of the student's education records that the parent or eligible student believes are inaccurate, misleading, or otherwise in violation of the student's privacy rights under FERPA.

Parents or eligible students who wish to ask the LEA to amend a record should write the appropriate LEA official, clearly identify the part of the record they want changed, and specify why it should be changed. If the LEA decides not to amend the record as requested by the parent or eligible student, the LEA will notify the parent or eligible student of the decision and of their right to a hearing regarding the request for amendment. Additional information regarding the hearing procedures will be provided to the parent or eligible student when notified of the right to a hearing.

3. The right to provide written consent before the LEA discloses personally identifiable information (PII) from the student's education records, except to the extent that FERPA authorizes disclosure without consent.

One exception, which permits disclosure without consent, is disclosure to LEA officials with legitimate educational interests. An LEA official is a person employed by the LEA as an administrator, supervisor, instructor, or support staff member (including health or medical staff and law enforcement unit personnel) or a school board member sitting in executive session in consideration of matters concerning a student upon which the school board may act. An LEA official also may include a volunteer or contractor outside of the school who performs an institutional service of function for which the LEA would otherwise use its own employees and who is under the direct control of the LEA with respect to the use and maintenance of PII from education records, such as an attorney, auditor, medical consultant, or therapist. An LEA official has a legitimate educational interest if the official needs to review an education record in order to fulfill his or her professional responsibility.

Upon request, the LEA discloses education records without consent to officials of another LEA in which a student seeks or intends to enroll, or is already enrolled, or receives services, if the disclosure is for purposes of the student's enrollment or transfer. [NOTE: FERPA requires an LEA to make a reasonable attempt to notify the parent or student of the records request unless it states in its annual notification that it intends to forward records on request.]

4. The right to file a complaint with the U.S. Department of Education concerning alleged failures by the [School] to comply with the requirements of FERPA. The name and address of the Office that administers FERPA are:

Family Policy Compliance Office
U.S. Department of Education
400 Maryland Avenue, SW
Washington, DC 20202

Family Educational Rights and Privacy Act (FERPA) Notice for Directory Information

The *Family Educational Rights and Privacy Act* (FERPA), a Federal law, requires that LEAs, with certain exceptions, obtain your written consent prior to the disclosure of personally identifiable information from your child's education records. However, LEAs may disclose appropriately designated "directory information" without written consent, unless you have advised the LEA to the contrary in accordance with LEA procedures. The primary purpose of directory information is to allow the LEA to include this type of information from your child's education records in certain school publications. Examples include:

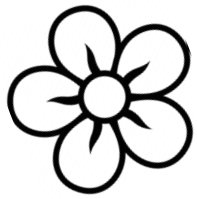
- A playbill, showing your student's role in a drama production
- Sports activity sheets, such as for wrestling, showing weight and height of team members
- The annual yearbook
- Graduation programs
- Honor roll or other recognition lists

Directory information, which is information that is generally not considered harmful or an invasion of privacy if released, can also be disclosed to outside organizations without a parent's prior written consent. Outside organizations include, but are not limited to, companies that manufacture class rings or publish yearbooks. In addition, federal law requires LEAs receiving assistance under the *Every Student Succeeds Act* (ESSA) to provide armed forces recruiters or institutions of higher education, upon request, with the following information – names, addresses and telephone listings – unless parents have advised the LEA that they do not want their student's information disclosed without their prior written consent.¹

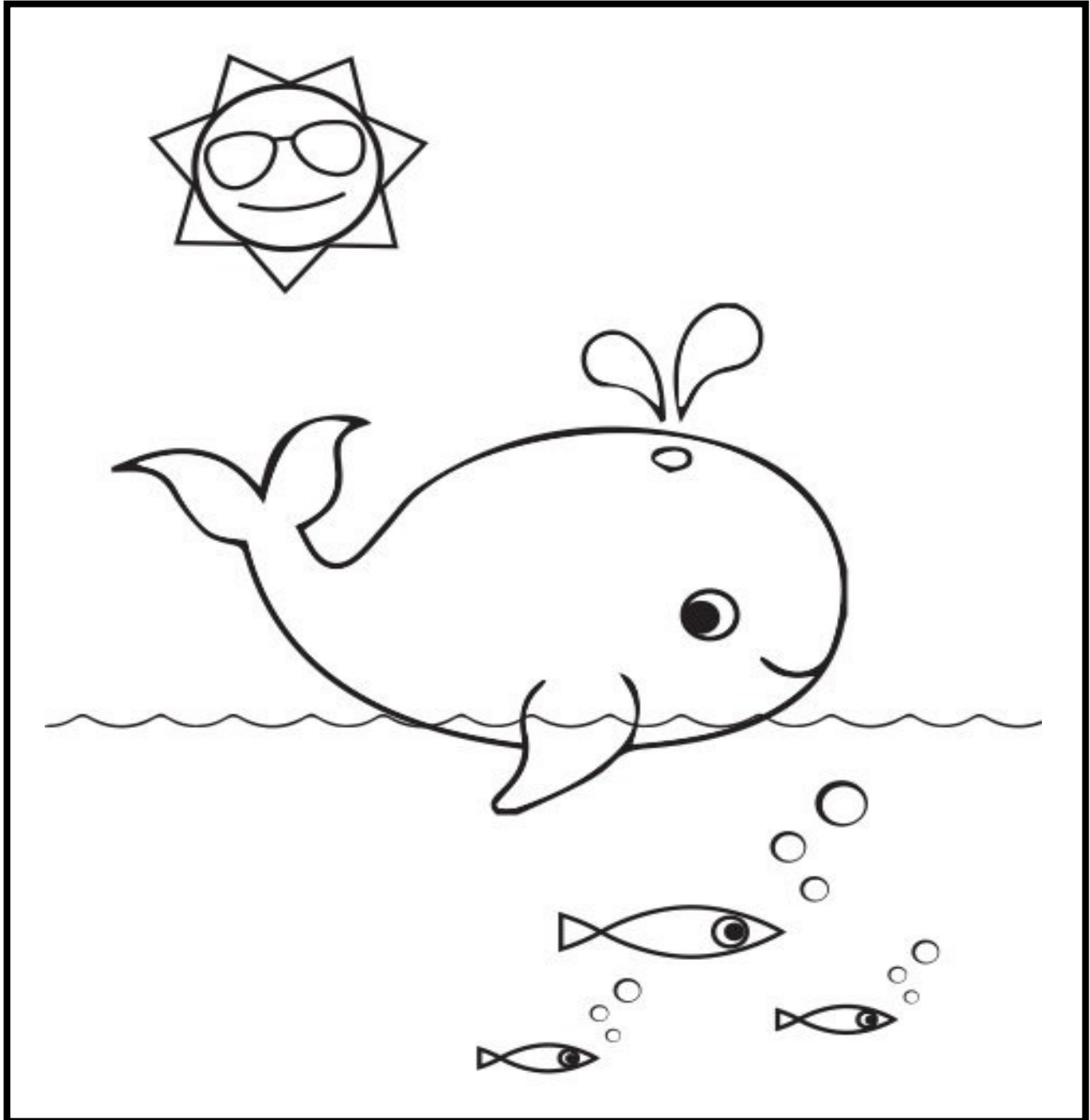
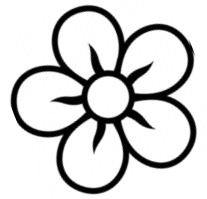
If you do not want the LEA to disclose directory information from your child's education records without your prior written consent, you must notify the LEA in writing by the start of the current school term. The CLIU#21 has designated the following information as directory information:

- Student's name
- Address
- Telephone listing
- Electronic mail address
- Photograph/video image
- Date and place of birth
- Major field of study
- The most recent educational agency or institution attended
- Dates of attendance
- Grade level
- Degrees, honors, and awards received
- Student ID number, user ID, or other unique personal identifier used to communicate in electronic systems that cannot be used to access educational records without a PIN, password, etc. (A student's SN, in whole or in part, cannot be used for this purpose)

¹ Every Student Succeeds Act (ESSA), P.L. 114-95 at Section 8025 (a)(2)(A) (Dec. 10, 2015)



SPRING & SUMMER



**To find out how we *Help Children Learn*,
visit our website at www.cliu.org.**

Helping Children Learn

"CLIU is a service agency committed to Helping Children Learn."